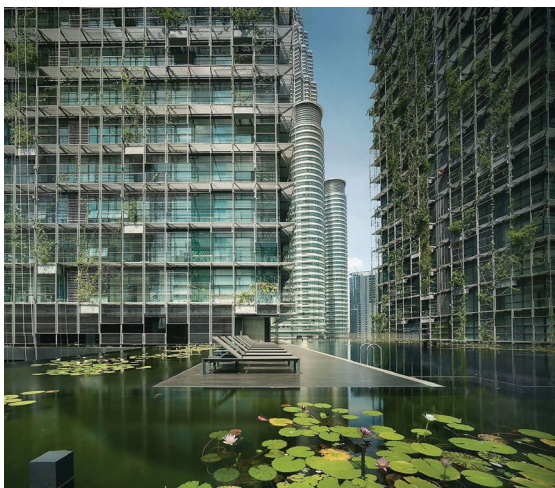


Le Nouvel@KLCC



[Full view of the 34 floor Sky Bridge]



[Full view of Le Nouvel KLCC]



[Full view of the Water Feature Wall-5 meters (height) by 47 meters (length)]

Project Overview

- **Location:** Lots 247, Section 43, Jalan Ampang / Lorong Mayang Dalam, Kuala Lumpur
- **Client:** Hartamaju Sdn Bhd (A subsidiary of Wingtai Asia)
- **Project Value:** USD 125.8 million
- **Construction Period:** November 10, 2011-January 15, 2016 (50 months)
- **Project Scope:** Two apartment blocks (197 units), one underground and 43 / 49 aboveground floors
- **Gross Floor Area:** 79,356 m²
- Achieved 4.3 million man-hours with zero accidents as of April 2016

Design Change

This exquisite residence building in Malaysia is the product of collaboration of world-class talent in their respective fields, including the celebrated French architect Jean Nouvel, Patrick Blanc in green wall (France), Koichiro Ickebuchi (Japan / Singapore) in interior design and L'Observatoire (US) in LED Lighting.

Located in the Kuala Lumpur Center City (KLCC) at the heart of the capital city across the Petronas Towers, its prime location also adds symbolic value to the luxury residence building.

Facade / Sky Bridge

Over 200 kinds of plants including vines and ivies extend from exterior planter boxes and drape over the entire exterior of the towers to create a unique look for the buildings' exterior.

The 30-ton, 23-meter sky bridge that connects the two towers on the 34th floor was constructed entirely with glass and aluminum and presented a great technical challenge. In order to ensure safety and stability, Ssangyong E&C performed a careful review in collaboration with related departments from HQ including the civil engineering technology team, while proposing a construction plan that include additional measures for safety and stability.

For the roofs constructed with over 100 tons of steel frame, Ssangyong E&C put together 240 aluminum panels with a special surface finish to form a single structure that looks like a massive reflection mirror.

Handover & Client-Managed Portion

The client directly contracted another interior design company to ensure the highest construction quality for the project that aspired to create the premier luxury residence building in Malaysia.

During the handover process that lasted more than a year from the date of completion on April 1, 2016, Ssangyong E&C underwent six sets of unit inspections by the management teams (Operation Dpt. Marketing Dpt. / Property Dpt.) and the interior design company from the client side.



[Edmund Cheng Wai Wing (second from left), current Maple Tree Chairman and Wing Tai Holdings Deputy Chairman and former SATS Chairman, at the Topping Out Ceremony]



[The architect Jean Nouvel (left) and Ssangyong E&C Chairman and CEO S. Joon Kim (right) during their site visit]

Ssangyong E&C's site manager and staff successfully completed the finest luxury residence in Malaysia, demonstrating once again Ssangyong E&C's outstanding capability in high-end building construction. 